

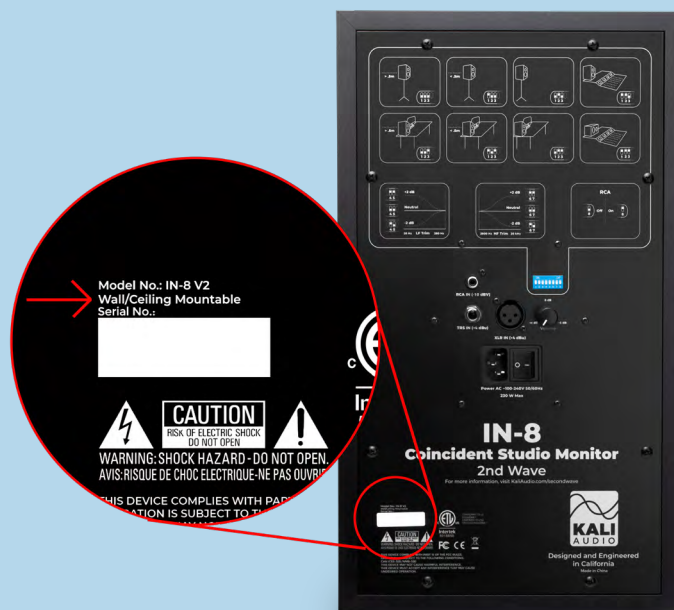


Kali Audio Loudspeaker Mounting Guide

Overview

Beginning in late 2021, Kali Audio has built all of our full-range studio monitors with mounting hardware that is compatible with loudspeaker-specific brackets and the various mounts from Triad Orbit. This allows the speakers to be safely mounted to a wall or ceiling, allowing for more flexible setups. Most new Kali speakers include this hardware, but it is worth it to double check if you intend to mount the speakers.

To check if your Kali Audio speaker includes this hardware, simply look at the bottom left hand corner of the back panel, above the serial number.



“Wall/Ceiling Mountable” may also be found prominently on the packaging of units that have the hardware for mounting built in. **If your IN- or LP-Series speaker does not say “Wall/Ceiling Mountable” on the amplifier panel, it does not have this hardware, and you should not by any means attempt to mount it.**

All SM-Series speakers are fully mountable.

A full list of the serial numbers of units that include this hardware may be found on [page 4](#).

Necessary Hardware

Mounting any Kali Audio speaker requires a loudspeaker-specific mounting bracket from Triad-Orbit. Per-loudspeaker mounting brackets can be found below. Kali also recommends using Triad-Orbit's SM-UM1 or SM-SW1 and you may elect to use further Triad Orbit hardware safe, secure mounting, and a clean look in your studio.



- 1 Loudspeaker
- 2 Mounting Bracket
- 3 Mount

Kali Loudspeaker Model	Triad Orbit Mounting Bracket	Recommended Triad Mount
LP-6	SM-KP6	SM-UM1
LP-8	SM-KP8	SM-UM1
IN-5	SM-KP5	SM-UM1
IN-8	SM-KP8	SM-UM1
SM-5(-C)	SM-KB1	SM-SW1

Serial Numbers of Mountable Units

All Kali Audio products include the date of manufacture in the serial number. This may be found in the 5th-10th characters of the serial number, so serial number KL82**103021**00001 was made on 10-30-21 or October 30, 2021. To double check the serial number of your speaker, find its model and version in the right hand column, and check to see that its serial number is AFTER that of the first unit produced with mounting hardware.

If the model and region you're looking for is not yet on this list, it has not been produced yet. This document will be updated on our website once new versions with mounting hardware are produced.

Model	First Unit w/ Mounting Hardware	Date of Manufacture
IN-5 White EU Model	All Units	10/30/21
LP-6 V2 US Model	All Units	12/07/21
LP-6 White V2 US Model	All Units	12/15/21
LP-6 White V2 Korea Model	All Units	12/15/21
LP-6 White V2 Russia Model	All Units	12/16/21
LP-6 White V2 EU Model	All Units	12/15/21
LP-6 White V2 UK Model	All Units	12/15/21
LP-6 V2 UK Model	KL6601182200001	01/18/22
LP-6 V2 Russia Model	KL9503052200001	03/05/22
IN-8 V2 Taiwan Model	KL9303122200001	03/12/22
IN-8 V2 Korea Model	KL6003122200071	03/12/22
LP-6 V2 Taiwan Model	KL9003262200061	03/26/22
LP-6 V2 Australia Model	KL6403122200121	03/12/22
LP-6 V2 India Model	KL8603262200151	03/26/22
LP-6 V2 Korea Model	KL7003122200097	03/12/22
LP-6 White V2 India Model	KL8703312200151	03/31/22
LP-6 White V2 Australia Model	KL6503122200021	03/12/22
LP-6 White V2 Taiwan Model	KL9103312200025	03/31/22
IN-8 V2 UK Model	KL5905182200033	05/18/22
IN-5 White UK Model	KL3E05192200001	05/19/22
LP-8 V2 US Model	KL5306022203071	06/02/22
IN-5 US Model	KL4309202203092	09/20/22
IN-8 V2 US Model	KL4510272204463	10/27/22
IN-5 Russia Model	KL9910192200055	10/19/22
IN-8 V2 Russia Model	KL9810182200041	10/18/22
SM-5(-C), All Models	All Units	05/01/23