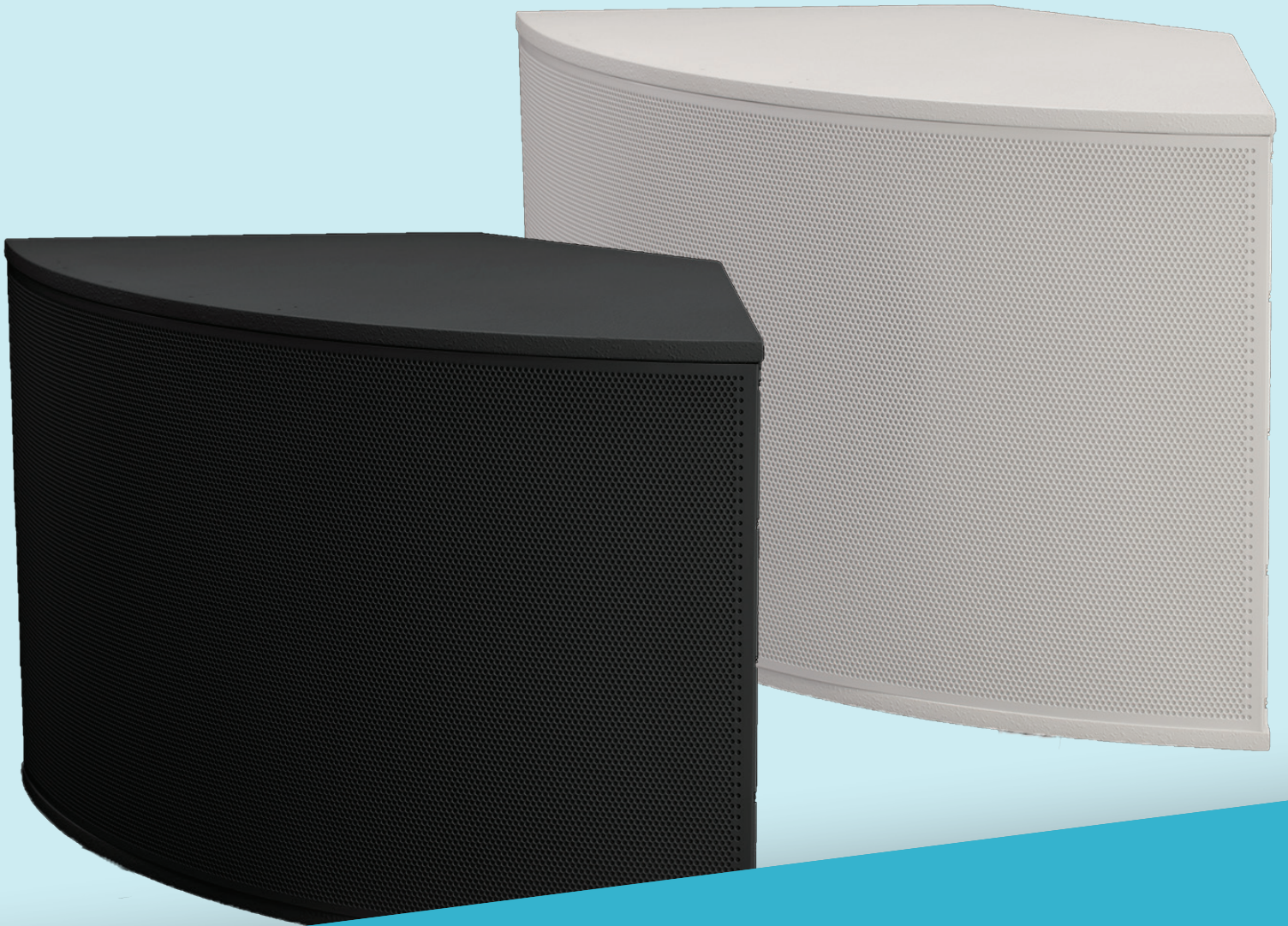


SM1001 Subwoofer



SOUNDTUBE[®]
E N T E R T A I N M E N T

by  MSE AUDIO[®]

www.mseaudio.com | 913.663.5600 | sales@mseaudio.com

SM1001 Subwoofer

10" Passive Subwoofer with Passive Radiator

The SM1001 is a 10" subwoofer with a passive radiator to generate deep, high output bass response. The SM1001 uses a proprietary 10-inch high-excursion, ultra-long throw mica-graphite polypropylene driver and a downward-firing bass radiator. The efficient long throw designs are superbly linear, making the SM1001 an ideal complement to any music system. The driver is attached to a 1.5-inch MDF baffle to eliminate cabinet distortion. The SM1001 is a great addition to background and foreground audio installations where high-quality, true bass response and rapid installation are critical. Aerobic rooms, retail stores, restaurants, nightclubs, bars, theme parks, arenas, ballrooms, and churches are all ideal fits for this subwoofer.



Description	10" passive subwoofer, surface and corner mount
Impedance	4 Ω
Sensitivity dB @ 2.83 V / 1 M	91 dB
Sensitivity dB @ 1 W / 1 M	88 dB
Frequency Response (± 3 dB)	26 Hz - 150 Hz
Max. Program Power	350 W
Max. Continuous Power RMS	175 W
Max. Power SPL @ 1 M	104 dB RMS, 116 dB Peak
Subwoofer Drivers	(2) 10" Ultra-Long Throw Mica Graphite Poly Cone w/ NBR Surround
Inputs	2-pin 5.08 mm Euroblock
Grille	Powder-coated steel
Colors	Black or white
Height	15.5 in / 393.7 mm
Width	24.5 in / 622.3 mm
Depth	12.5 in / 317.5 mm
Weight	29.1 lbs / 13.2 kg
Packaging	One per box
Included Accessories	Euroblock connector, rubber feet
Optional Accessories	Surface-mount bracket (AC-SM1001p-S) and Corner-mount bracket (AC-SM1001p-C)

SOUNDTUBE
ENTERTAINMENT

by MSE AUDIO